

Duncan Funding 2016-1 Plc

Monthly Report November 2016



General Information

Distribution Date	20 December 2016
Reporting/ Collection Period	01 November 2016 - 30 November 2016
Accrual Period	17 October 2016 - 16 January 2017
Number of days in interest period	92
Last Payment Date	17 October 2016
Next Payment Date	17 January 2017
Index	3m £ LIBOR; 3m EURIBOR
Portfolio Currency	GBP (£)

Additional Information

Prospectus	www.tsb.co.uk/investors/debt-investors/securitisation
Investor Reporting	www.tsb.co.uk/investors/debt-investors/securitisation
Transaction Documentation	https://boeportal.co.uk/GlobalPortal/Account/Login.aspx
Loan Level Reporting	https://boeportal.co.uk/GlobalPortal/Account/Login.aspx
Cashflow Model	https://boeportal.co.uk/GlobalPortal/Account/Login.aspx

Transaction Counterparties

Issuer	Duncan Funding 2016-1 Plc
Seller	TSB Bank Plc
Security / Note Trustee	Citicorp Trustee Company Limited
Share Trustee	SFM Corporate Services Limited
Agent Bank and Principal Paying Agent	Citibank, N.A., London Branch
Issuer and Swap Collateral Account Bank	Citibank, N.A., London Branch
Cash Manager	TSB Bank Plc
Collection Account Bank	Lloyds Bank Plc
Corporate Services Provider	Structured Finance Management Limited
Servicer	TSB Bank Plc
Start Up Loan Provider	TSB Bank Plc
Interest Rate and Currency Swap Provider	Wells Fargo Bank, N.A., London Branch
Back-Up Facilitator	Structured Finance Management Limited
Arranger	Bank of America Merrill Lynch
Lead Managers	Banco de Sabadell, S.A./Bank of America Merrill Lynch/Citigroup Global Markets Limited
Dematerialised Note Registrar	TSB Bank Plc
Subordinated Noteholder and Retention Noteholder	TSB Bank Plc

Monthly Report Content

General information	Page 1
Portfolio Characteristics	Page 3
Mortgage Assets Data	Page 4 to Page 6
Capital Structure	Page 7
Credit Enhancement	Page 8
Swaps	Page 9
Waterfall	Page 10
Ledgers	Page 11
Ratings and Triggers	Page 12 to Page 14
Glossary and Definitions	Page 15 to Page 16

Contact Details

Steve Vance	Head of Secured Funding	+44 1452 373701	steve.vance@tsb.co.uk
Cordelia Satchell	Secured Funding Senior Manager	+44 2070 039173	cordelia.satchell@tsb.co.uk
Olya Chappell	Secured Funding Manager	+44 1452 375302	olya.chappell@tsb.co.uk securedfunding@tsb.co.uk

TSB Bank Plc Registered Address	Henry Duncan House, 120 George Street, Edinburgh EH2 4LH
TSB Bank Plc Address for Correspondence	Barnwood 2, Barnett Way, Gloucester, GL4 3RL



Duncan Funding 2016-1 Plc - Monthly Report November 2016

Disclaimer

This document should not be distributed to any U.S. Persons (as such term is defined in Regulation S under the U.S. Securities Act) or to any person or address in the U.S. other than Qualified Institutional Buyers



The notes were awarded a quality label by the Prime Collateralised Securities initiative (PCS) on 27 May 2016. For further information on PCS and the label see www.pcsmarket.org. As a condition of being awarded the label, TSB Bank plc has agreed to make the following disclosures.

PCS Disclosure

In relation to the representations warranties and undertakings required pursuant to item 1 (d) (viii) of the PCS Rulebook please refer to the Originator's Certificate and Prospectus.

The information and documents required by PCS Eligibility Criteria 3(b)(vii)(A) and disclosed in "Listing and General Information", paragraph 9, page 276 of the Prospectus shall be made available until the date the last note is redeemed in full. The transaction documents are also available at <https://boeportal.co.uk/GlobalPortal/Account/Login.aspx>. Loan level data relating to the pool is also available at the aforementioned website and is updated on a quarterly basis. Such information will remain available until the date the last note is redeemed in full.

At the date of the issuance of the notes, a cash flow model for the transaction was made available on the third-party, proprietary services offered by Intex and ABSnet. TSB Bank plc has not endorsed and does not accept any responsibility for such third-party models. The liability only cash flow model required by the Bank of England Market Notice dated 30 November 2010 is available at <https://boeportal.co.uk/GlobalPortal/Account/Login.aspx>. At least one such cash flow model will remain available until the date the last note is redeemed in full.

Legal Disclaimer

The following document has been prepared by TSB Bank plc. The document is provided to you for information purposes only. The document is not intended as an offer or solicitation for the purchase or sale of any financial instrument and does not comprise a prospectus for the purposes of the EU directive 2003/71/EC and/or Part VI of the Financial Services and Markets Act 2000 of the United Kingdom or otherwise. This document does not constitute an offer or a solicitation with respect to any securities in the United States. Furthermore, the Notes have not been and will not be registered under the United States Securities Act of 1933, as amended (the Securities Act) or with any securities regulatory authority of any state or other jurisdiction of the United States and may not be offered, sold or delivered within the United States or to or for the account or benefit of U.S. persons (as defined in Regulation S under the Securities Act (Regulation S) except to persons that are qualified institutional buyers within the meaning of Rule 144A (Rule 144A) under the Securities Act (QIBs), or pursuant to an exemption from, or in a transaction not subject to, the registration requirements of the Securities Act and applicable state securities laws. Accordingly, the Notes are being offered, sold or delivered only to (i) non-U.S. persons (as defined in Regulation S under the Securities Act (Regulation S)) outside the United States in reliance on Regulation S, or (ii) QIBs in reliance on Rule 144A.

Whilst every effort has been taken to ensure that the document is accurate, current, complete, fit for its intended purpose and compliant with the relevant United Kingdom legislation and regulations as the date of issue, TSB Bank plc does not warrant that this document is accurate, current, complete, fit for its intended purpose and compliant with the relevant United Kingdom legislation and regulations as errors might occur due to circumstances which are beyond our control. In particular, TSB Bank plc does not warrant that any market data or prices are complete or accurate.

Any opinions or estimates expressed in the document may be subject to change without notice and TSB Bank plc is under no obligation to update its opinions, estimates or other of its affiliates, accept any liability whatsoever for any direct or consequential loss arising from any use of this document or its contents. Investors should not subscribe for any securities referred to herein except on the basis of information contained in the prospectus.

Please remember that past performance is not necessarily a guide to future performance. The value of instruments and the income from them can go down as well as up. Columns stating percentage amounts may not add to 100% due to rounding.

This document is also available for downloading in Excel and PDF format from www.tsb.co.uk/investors/debt-investors/securitisation. In the event of any differences in the data between the Excel and PDF formats of the report, the PDF report should always be assumed to be correct. Whilst every attempt is made to keep the format and content of the Excel report the same each month, TSB Bank plc cannot be held responsible for any changes and the implications it may have for any third parties own spreadsheet links and macros.

Duncan Funding 2016-1 Plc - Monthly Report November 2016

Portfolio Characteristics

Portfolio Characteristics

	At Issue*	Current Period	Prior Period
Number of Mortgage Accounts in Portfolio	27,297	25,998	26,217
Current Balance of Mortgage Accounts in Portfolio	£3,350,180,350	£3,120,845,771	£3,155,168,318
Cash and Other Assets		£177,732,260	£136,869,699
Mortgage Collections in Period		£40,440,278	£40,285,432
Weighted Average Interest Rate	Fixed	2.75%	2.76%
Weighted Average Margin	Variable	2.05%	2.05%
Weighted Average Pre-Swap Mortgage Yield		2.57%	2.57%
Weighted Average Post-Swap Mortgage Yield		2.35%	2.36%
Weighted Average Loan Seasoning (Months)	38.18	43.24	42.38
Weighted Average Loan Remaining Term (Years)		19.67	19.67
Average Mortgage Account Balance	£122,571	£120,042	£120,348
Weighted Average Original LTV of Accounts, %	70.33	70.46	70.46
Weighted Average Current Indexed LTV of Accounts, %	57.76	56.04	56.15

* Weighted Average and Average balances are reported as of the first reporting period end (May 2016)

** Weighted Average Margin for variable rate is calculated as weighted average interest rate less 25bps

Performance Ratios

	Current Period	Prior Period
Constant Prepayment Rate (CPR) - Annualised		
Single month	9.11%	8.83%
Quarterly	9.85%	10.40%
Since Transaction Close	10.35%	10.56%
Principal Payment Rate (PPR) - Annualised		
Single month	12.85%	12.56%
Quarterly	13.55%	14.05%
Since Transaction Close	13.72%	13.87%
Constant Default Rate (CDR) - Annualised		
Single month	0.00%	0.00%
Quarterly	0.00%	0.00%
Since Transaction Close	0.00%	0.00%

Arrears Analysis of Non Repossessed Mortgage Accounts

Month(s) In Arrears	Arrears Balance	No of Accounts	% of Accounts	Current Balance	% of Current Balance
Current to < 1	£9,584	25,940	99.78%	£3,114,419,529	99.79%
1 to < 2	£24,435	33	0.13%	£3,688,659	0.12%
2 to < 3	£16,907	10	0.04%	£1,270,962	0.04%
3 to < 6	£41,194	14	0.05%	£1,425,178	0.05%
6 to < 9	£3,294	1	0.00%	£41,443	0.00%
9 to < 12	£0	0	0.00%	£0	0.00%
≥ 12	£0	0	0.00%	£0	0.00%
Total	£95,415	25,998	100.00%	£3,120,845,771	100.00%

Capitalised Arrears	Current Period (£)	% of Current Balance	Previous Period (£)	% of Current Balance
Arrears Capitalised in Month	£0	0.00%	£0	0.00%

Portfolio Movements

	Current Period		Transaction to Date	
	No of Accounts	Balance	No of Accounts	Balance
Opening Total/Portfolio Purchased	26,217	£3,155,168,318	27,297	£3,350,180,350
Pool Additions, out of which:	0	£1,620,405	0	£11,296,205
New Portfolios	0	£0	0	£0
Further Advances*	0	£1,620,405	0	£11,296,205
Portfolio Repurchases, out of which	15	£2,095,507	105	£13,835,580
Breaches of Warranties	0	£0	0	£0
Breaches of New Portfolio Conditions	0	£0	0	£0
Non-Eligible Further Advances	0	£0	1	£112,861
Non-Eligible Product Switches	15	£2,095,507	104	£13,722,720
Non-Compliant LCR Loans	0	£0	0	£0
Principal Receipts/ Redemptions**	204	£33,855,586	1,194	£226,853,539
Scheduled Principal Repayments		£10,935,048		£67,056,517
Unscheduled Principal Repayments		£22,920,538		£159,797,022
Unpaid interest		£8,141		£58,335
Other		£0		£0
Closing Total	25,998	£3,120,845,771	25,998	£3,120,845,771

* Further Advances are purchased by Duncan Funding 2016-1 in the subsequent reporting month

** Number of accounts redeemed and balance of principal collected during the period

Possessions

	Current Period		Transaction to Date	
	No of Accounts	Balance	No of Accounts	Balance
Possessions at the start of the period	0	£0	0	£0
Repossessed in period	0	£0	0	£0
Sold possessions in the period	0	£0	0	£0
Possessions at the end of the period	0	£0	0	£0

* Where an account is in the process of being sold this balance excludes transactions associated with the sale where the sale has not fully completed

Losses

	Current Period		Transaction to Date	
	No of Accounts	Balance	No of Accounts	Balance
Losses (excl. Recoveries)	0	£0	0	£0
Recoveries	0	£0	0	£0
Losses (incl. Recoveries)	0	£0	0	£0

Weighted average loss severity, % 0.00%

Set Off Balances

	Current Period		Previous Period	
	Balance	% of Mortgage	Balance	% of Mortgage
Deposit Balances	£90,036,030	2.89%	£92,045,195	2.92%
Deposit capped at mortgage balance	£81,383,456	2.61%	£82,982,049	2.63%
Deposit over FSCS limit	£4,350,220	0.14%	£4,962,412	0.16%

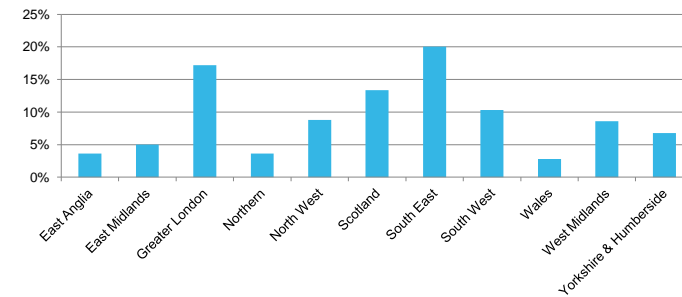
Duncan Funding 2016-1 Plc - Monthly Report November 2016

Mortgage Asset Data

Geographic Analysis

	No of Accounts	% of Accounts	Current Balance	% of Current Balance
East Anglia	938	3.61%	£112,453,017	3.60%
East Midlands	1,500	5.77%	£155,606,598	4.99%
Greater London	2,046	7.87%	£536,139,132	17.18%
Northern	1,354	5.21%	£113,542,455	3.64%
North West	2,770	10.65%	£273,912,865	8.78%
Scotland	5,419	20.84%	£416,612,952	13.35%
South East	3,615	13.90%	£625,495,820	20.04%
South West	2,567	9.87%	£322,396,916	10.33%
Wales	938	3.61%	£86,497,191	2.77%
West Midlands	2,603	10.01%	£267,598,409	8.57%
Yorkshire & Humberside	2,248	8.65%	£210,590,414	6.75%
Total	25,998	100.00%	£3,120,845,771	100.00%

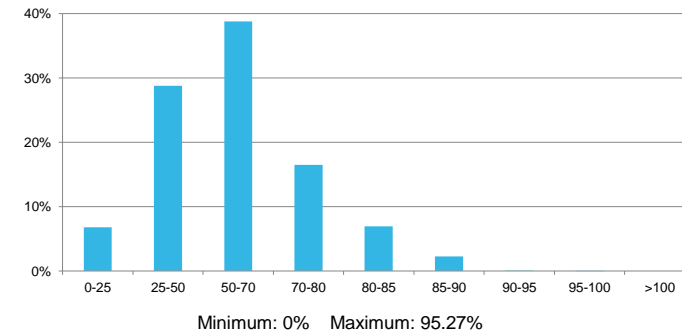
Geographic Analysis



Indexed Loan to Value Ratios

	No of Accounts	% of Accounts	Current Balance	% of Current Balance
0% to 25%	4,441	17.08%	£211,571,258	6.78%
> 25% to 50%	8,224	31.63%	£897,811,718	28.77%
> 50% to 55%	2,010	7.73%	£280,792,299	9.00%
> 55% to 60%	1,915	7.37%	£262,739,170	8.42%
> 60% to 65%	2,022	7.78%	£312,344,209	10.01%
> 65% to 70%	2,195	8.44%	£353,121,856	11.31%
> 70% to 75%	1,775	6.83%	£280,116,832	8.98%
> 75% to 80%	1,475	5.67%	£234,737,042	7.52%
> 80% to 85%	1,420	5.46%	£215,845,533	6.92%
> 85% to 90%	508	1.95%	£69,720,795	2.23%
> 90% to 95%	12	0.05%	£1,939,066	0.06%
> 95% to 100%	1	0.00%	£105,993	0.00%
> 100%	0	0.00%	£0	0.00%
Total	25,998	100.00%	£3,120,845,771	100.00%

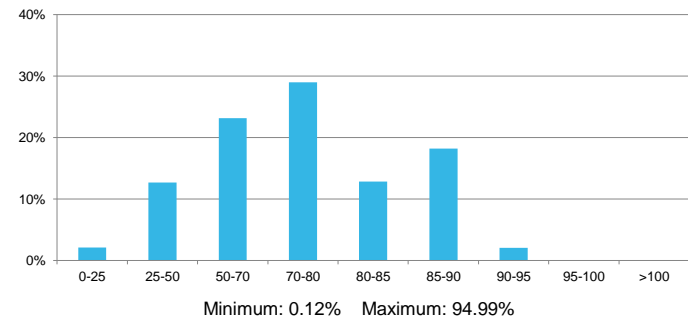
Indexed Loan to Value,%



Original Loan to Value Ratios

	No of Accounts	% of Accounts	Current Balance	% of Current Balance
0% to 25%	1,476	5.68%	£65,474,105	2.10%
> 25% to 50%	4,934	18.98%	£396,129,483	12.69%
> 50% to 55%	1,343	5.17%	£147,310,412	4.72%
> 55% to 60%	1,972	7.59%	£243,524,112	7.80%
> 60% to 65%	1,135	4.37%	£130,335,972	4.18%
> 65% to 70%	1,588	6.11%	£201,447,619	6.45%
> 70% to 75%	3,633	13.97%	£542,273,782	17.38%
> 75% to 80%	2,542	9.78%	£362,272,705	11.61%
> 80% to 85%	2,668	10.26%	£400,160,748	12.82%
> 85% to 90%	4,087	15.72%	£568,137,071	18.20%
> 90% to 95%	620	2.38%	£63,779,763	2.04%
> 95% to 100%	0	0.00%	£0	0.00%
> 100%	0	0.00%	£0	0.00%
Total	25,998	100.00%	£3,120,845,771	100.00%

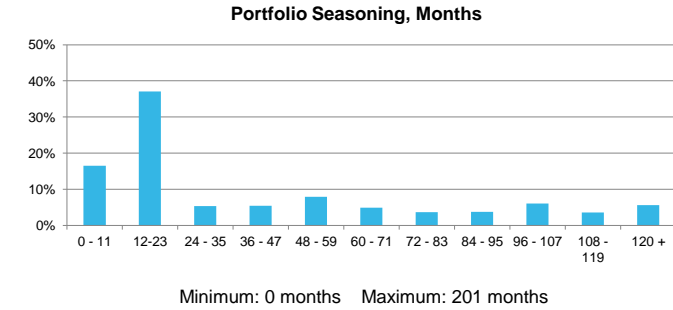
Original Loan to Value,%



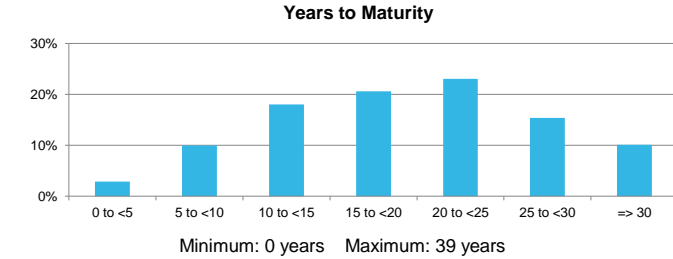
Duncan Funding 2016-1 Plc - Monthly Report November 2016

Mortgage Asset Data

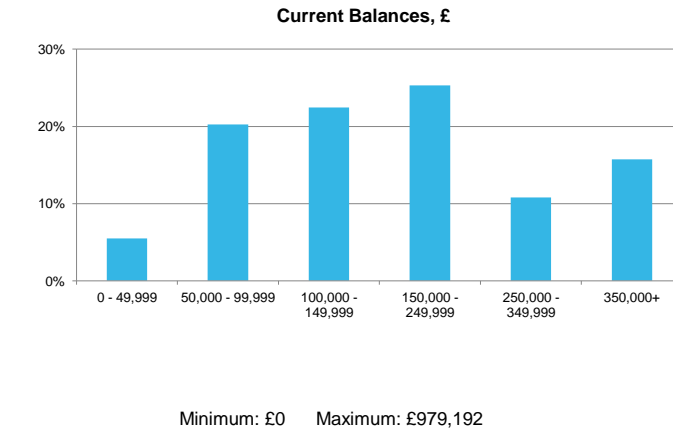
Seasoning of Loans	No of Loans	% of Loans	Current Balance	% of Current Balance
0 to <12 months	6,987	11.87%	£514,943,658	16.50%
12 to <24 months	14,561	24.74%	£1,156,649,559	37.06%
24 to <36 months	3,139	5.33%	£166,488,199	5.33%
36 to <48 months	3,773	6.41%	£171,401,043	5.49%
48 to <60 months	6,261	10.64%	£246,945,286	7.91%
60 to <72 months	3,897	6.62%	£154,674,243	4.96%
72 to <84 months	2,942	5.00%	£115,721,266	3.71%
84 to <96 months	3,033	5.15%	£117,252,324	3.76%
96 to <108 months	4,519	7.68%	£188,876,509	6.05%
108 to <120 months	3,201	5.44%	£112,613,342	3.61%
≥ 120 months	6,539	11.11%	£175,280,342	5.62%
Total	58,852	100.00%	£3,120,845,771	100.00%



Years to Maturity	No of Loans	% of Loans	Current Balance	% of Current Balance
0 to <5 years	4,441	7.55%	£89,109,294	2.86%
5 to <10 years	10,518	17.87%	£311,737,748	9.99%
10 to <15 years	13,588	23.09%	£562,994,066	18.04%
15 to <20 years	11,396	19.36%	£642,909,095	20.60%
20 to <25 years	9,530	16.19%	£718,888,944	23.04%
25 to <30 years	5,645	9.59%	£480,677,219	15.40%
≥ 30 years	3,734	6.34%	£314,529,404	10.08%
Total	58,852	100.00%	£3,120,845,771	100.00%



Outstanding Balances	No of Accounts	% of Accounts	Current Balance	% of Current Balance
< £25,000	1,686	6.49%	£28,092,725	0.90%
£25,000 to < £50,000	3,740	14.39%	£142,773,920	4.57%
£50,000 to < £75,000	4,482	17.24%	£280,042,703	8.97%
£75,000 to < £100,000	4,045	15.56%	£352,287,676	11.29%
£100,000 to < £150,000	5,716	21.99%	£700,253,253	22.44%
£150,000 to < £200,000	2,813	10.82%	£484,259,012	15.52%
£200,000 to < £250,000	1,372	5.28%	£305,461,142	9.79%
£250,000 to < £300,000	742	2.85%	£202,633,412	6.49%
£300,000 to < £350,000	418	1.61%	£134,589,641	4.31%
£350,000 to < £400,000	311	1.20%	£116,071,801	3.72%
£400,000 to < £450,000	188	0.72%	£79,540,058	2.55%
£450,000 to < £500,000	120	0.46%	£57,110,852	1.83%
£500,000 to < £600,000	162	0.62%	£88,603,027	2.84%
£600,000 to < £700,000	97	0.37%	£62,592,350	2.01%
£700,000 to < £800,000	48	0.18%	£35,711,683	1.14%
£800,000 to < £900,000	38	0.15%	£32,117,230	1.03%
£900,000 to < £1,000,000	20	0.08%	£18,705,288	0.60%
Total	25,998	100.00%	£3,120,845,771	100.00%



Duncan Funding 2016-1 Plc - Monthly Report November 2016

Mortgage Asset Data

Product Breakdown

	Current Period	Previous Period
Discretionary Rate based Loans (by balance)	30.79%	31.07%
Tracker Rate Loans (by balance)	8.66%	8.64%
Fixed Loans (by balance)	60.55%	60.29%
Total	100.00%	100.00%

Borrower Interest Rate Bands

	No of Loans	% of Loans	Current Balance	% of Current Balance
<1.0%	11,621	19.75%	£137,394,345	4.40%
1.0% to <2.0%	3,657	6.21%	£419,485,996	13.44%
2.0% to <3.0%	29,544	50.20%	£1,654,269,014	53.01%
3.0% to <4.0%	12,775	21.71%	£812,307,206	26.03%
4.0% to <5.0%	1,023	1.74%	£88,388,594	2.83%
5.0% to <6.0%	208	0.35%	£8,585,936	0.28%
6.0% to <7.0%	24	0.04%	£414,681	0.01%
7.0% to <8.0%	0	0.00%	£0	0.00%
≥ 8.0%	0	0.00%	£0	0.00%
Total	58,852	100.00%	£3,120,845,771	100.00%

Fixed Loan - Interest Rate Bands

	No of Loans	% of Loans	Current Balance	% of Current Balance
<1.0%	0	0.00%	£0	0.00%
1.0% to <2.0%	2,194	10.89%	£294,199,287	15.57%
2.0% to <3.0%	10,593	52.57%	£934,305,454	49.45%
3.0% to <4.0%	6,179	30.66%	£565,586,650	29.93%
4.0% to <5.0%	978	4.85%	£87,037,933	4.61%
5.0% to <6.0%	186	0.92%	£8,060,976	0.43%
6.0% to <7.0%	21	0.10%	£364,306	0.02%
7.0% to <8.0%	0	0.00%	£0	0.00%
≥ 8.0%	0	0.00%	£0	0.00%
Total	20,151	100.00%	£1,889,554,607	100.00%

Fixed Rate Roll Date

	No of Loans	% of Loans	Current Balance	% of Current Balance
2016	266	1.32%	£25,618,012	1.36%
2017	6,426	31.89%	£765,676,340	40.52%
2018	3,515	17.44%	£258,062,429	13.66%
2019	1,058	5.25%	£62,857,661	3.33%
2020	5,423	26.91%	£517,374,246	27.38%
2021	1,544	7.66%	£84,606,436	4.48%
2022	1	0.00%	£41,905	0.00%
2023	1	0.00%	£33,642	0.00%
2024	7	0.03%	£203,692	0.01%
2025	1,545	7.67%	£140,325,406	7.43%
2026	365	1.81%	£34,754,837	1.84%
Total	20,151	100.00%	£1,889,554,607	100.00%

Purpose of Loan

	No of Loans	% of Loans	Current Balance	% of Current Balance
Purchase	38,031	64.62%	£2,019,875,702	64.72%
Remortgage	20,821	35.38%	£1,100,970,069	35.28%
Total	58,852	100.00%	£3,120,845,771	100.00%

Repayment Terms

	No of Loans	% of Loans	Current Balance	% of Current Balance
Interest Only	5,341	9.08%	£361,107,516	11.57%
Repayment	53,511	90.92%	£2,759,738,255	88.43%
Total	58,852	100.00%	£3,120,845,771	100.00%

Origination Channel

	No of Loans	% of Loans	Current Balance	% of Current Balance
Direct	38,575	65.55%	£1,601,395,957	51.31%
Introduced	20,277	34.45%	£1,519,449,814	48.69%
Total	58,852	100.00%	£3,120,845,771	100.00%

Borrower employment status

	No of Accounts	% of Accounts	Current Balance	% of Current Balance
Employed	23,416	90.07%	£2,751,021,224	88.15%
Self Employed	2,582	9.93%	£369,824,547	11.85%
Retirement	0	0.00%	£0	0.00%
Total	25,998	100.00%	£3,120,845,771	100.00%

Property type

	No of Accounts	% of Accounts	Current Balance	% of Current Balance
Residential (House)	14,212	54.67%	£1,852,995,505	59.37%
Residential (Terraced)	7,169	27.58%	£752,151,068	24.10%
Residential (Flat/Apartment)	3,113	11.97%	£359,470,056	11.52%
Residential (Bungalow)	1,504	5.79%	£156,229,142	5.01%
Total	25,998	100.00%	£3,120,845,771	100.00%

Discretionary Rates

	Rate	Effective Date
Standard Variable Rate	2.25%	Sep-16
Homeowner Variable Rate	3.74%	Sep-16

Duncan Funding 2016-1 Plc - Monthly Report November 2016

Capital Structure

Notes In Issue	A1a	A1b	A2	A3	B	C	Subordinated	Retention
Stock Exchange Listing	London	London	London	London	London	London	-	-
ISIN - 144a	XS1413355709	XS1409655880	XS1409668354	XS1409674832	XS1409694434	XS1409710149	-	-
ISIN - Reg S	XS1409635189	XS1409639686	XS1409667976	XS1409679807	XS1409685101	XS1409702047	-	-
Original Rating (Fitch/Moody's)	AAAsf/Aaa(sf)	AAAsf/Aaa(sf)	AAAsf/Aaa(sf)	AAAsf/Aaa(sf)	AAAsf/Aa2(sf)	Asf/Aa3(sf)	Not rated	Not rated
Current Rating (Fitch/Moody's)	AAAsf/Aaa(sf)	AAAsf/Aaa(sf)	AAAsf/Aaa(sf)	AAAsf/Aaa(sf)	AAAsf/Aa2(sf)	Asf/Aa3(sf)	Not rated	Not rated
Issue Date	27-May-16	27-May-16	27-May-16	27-May-16	27-May-16	27-May-16	27-May-16	27-May-16
Currency	EUR	GBP	GBP	GBP	GBP	GBP	GBP	GBP
FX Rate	0.7705	1.0000	1.0000	1.0000	1.0000	1.0000	1.0000	1.0000
Issue Size	€ 150,000,000	£834,400,000	£450,000,000	£1,450,000,000	£79,600,000	£47,800,000	£207,000,000	£170,656,000
Issue Size GBP Equivalent	£115,575,000	£834,400,000	£450,000,000	£1,450,000,000	£79,600,000	£47,800,000	£207,000,000	£170,656,000
Outstanding Amount	€ 135,051,076	£751,244,121	£423,297,106	£1,450,000,000	£79,600,000	£47,800,000	£207,000,000	£164,267,663
Outstanding Amount GBP Equivalent	£104,056,854	£751,244,121	£423,297,106	£1,450,000,000	£79,600,000	£47,800,000	£207,000,000	£164,267,663
Privately-placed at Origination	-	-	-	-	-	-	-	-
Retained by Originator at Origination	-	£394,400,000	£450,000,000	£1,450,000,000	£79,600,000	£47,800,000	£207,000,000	£170,656,000
Publicly-placed at Origination	€ 150,000,000	£440,000,000	-	-	-	-	-	-
Subsequently Placed	-	-	-	-	-	-	-	-
Legal Final Maturity Date	17-Apr-63	17-Apr-63	17-Apr-63	17-Apr-63	17-Apr-63	17-Apr-63	17-Apr-63	17-Apr-63
Step Up/Call Date	19-Apr-21	19-Apr-21	19-Apr-21	19-Apr-21	19-Apr-21	19-Apr-21	19-Apr-21	19-Apr-21
Reference rate	3m EURIBOR	3m £ LIBOR	3m £ LIBOR	3m £ LIBOR	3m £ LIBOR	3m £ LIBOR	3m £ LIBOR	3m £ LIBOR
Rate Fixing	-0.31100%	0.40100%	0.40100%	0.40100%	0.40100%	0.40100%	0.40100%	0.40100%
Margin	0.40000%	0.77000%	0.79000%	0.82000%	1.80000%	2.50000%	0.00000%	0.80611%
All-in rate, Accrual Period	0.08900%	1.17100%	1.19100%	1.22100%	2.20100%	2.90100%	0.40100%	1.20711%
Frequency	Quarterly	Quarterly	Quarterly	Quarterly	Quarterly	Quarterly	Quarterly	Quarterly
Note Type, Pre-Enforcement	Scheduled Amort	Scheduled Amort	Scheduled Amort	Pass-through	Pass-through	Pass-through	Pass-through	Scheduled Amort - A1 and A2 Tranches
Note Type, Post-Enforcement	Pass-through	Pass-through	Pass-through	Pass-through	Pass-through	Pass-through	Pass-through	Pass-through
Last Interest Payment Date	17-Oct-16	17-Oct-16	17-Oct-16	17-Oct-16	17-Oct-16	17-Oct-16	17-Oct-16	17-Oct-16
Next Interest Payment Date	17-Jan-17	17-Jan-17	17-Jan-17	17-Jan-17	17-Jan-17	17-Jan-17	17-Jan-17	17-Jan-17
Day count convention	Actual/360	Actual/365	Actual/365	Actual/365	Actual/365	Actual/365	Actual/365	Actual/365
Total note coupon, Next Interest Payment Date	€ 30,717	£2,217,343	£1,270,726	£4,462,504	£441,599	£349,519	£209,223	£499,797
Note balance at the start of the period	€ 150,000,000	£834,400,000	£450,000,000	£1,450,000,000	£79,600,000	£47,800,000	£207,000,000	£170,656,000
Principal distributed in the period	€ 14,948,924	£83,155,879	£26,702,894	£0	£0	£0	£0	£6,388,337
Note balance at the end of the period	€ 135,051,076	£751,244,121	£423,297,106	£1,450,000,000	£79,600,000	£47,800,000	£207,000,000	£164,267,663
Pool factor	0.9003405	0.9003405	0.9406602	1.0000000	1.0000000	1.0000000	1.0000000	0.9625660
Expected Principal Amount	€ 14,948,924	£83,155,879	£26,702,894	£0	£0	£0	£0	£6,388,337
Principal Shortfall	€ 0	£0	£0	£0	£0	£0	£0	£0
Cumulative Principal Shortfall	€ 0	£0	£0	£0	£0	£0	£0	£0
Note coupon, Last Interest Payment Date	0.20300%	1.43681%	1.45681%	1.48681%	2.46681%	3.16681%	0.66681%	1.47218%
Interest accrued up to Last Interest Payment Date	€ 120,954	£4,696,959	£2,568,376	£8,446,303	£769,293	£593,052	£540,774	£984,296
Interest payments made at Last Interest Payment Date	€ 120,954	£4,696,959	£2,568,376	£8,446,303	£769,293	£593,052	£540,774	£984,296
Interest Shortfall	-	-	-	-	-	-	-	-
Cumulative Interest Shortfall	-	-	-	-	-	-	-	-

Duncan Funding 2016-1 Plc - Monthly Report November 2016

Credit Enhancement and Retention Note

Credit Enhancement and Liquidity Support	Amount (GBP Equivalent)	Retention Note (GBP Equivalent)	Total (GBP Equivalent)	% of Total	Subordination Notes
Class A Notes	£2,728,598,081	£143,611,663	£2,872,209,744	89.08%	10.92%
Class B Notes	£79,600,000	£4,190,000	£83,790,000	2.60%	8.32%
Class C Notes	£47,800,000	£2,516,000	£50,316,000	1.56%	6.76%
Subordinated Note	£207,000,000	£10,895,000	£217,895,000	6.76%	0.00%
Retention Note (including Start Up Loan Tranche)	£164,267,663				
Total	£3,227,265,744		£3,224,210,744	100.00%	
Liquidity Reserve Fund Required Amount	£58,591,500	1.82%	(1.90% of the Class A and Class B Notes and Retention Tranche A and Tranche B)		
Liquidity Reserve Fund Balance	£58,591,500	1.82%	(1.90% of the Class A and Class B Notes and Retention Tranche A and Tranche B)		

Excess Spread	Last IPD	Previous IPD
Excess spread - quarter	£9,195,969	-

Retention Note - Tranche Breakdown	Amount (GBP Equivalent)	3m£L Margin
Class A1a Notes	£5,476,771	0.89570%
Class A1b Notes	£39,539,354	0.77000%
Class A2 Notes	£22,279,538	0.79000%
Class A3 Notes	£76,316,000	0.82000%
Class B Notes	£4,190,000	1.80000%
Class C Notes	£2,516,000	2.50000%
Subordinated Note	£10,895,000	0.00000%
Start Up Loan	£3,055,000	1.00000%
Total	£164,267,663	0.80611%

TSB Bank, in its capacity as originator, will retain, on an on-going basis, a material net economic interest in the transaction of not less than 5 per cent., in accordance with Article 405 of Regulation (EU) No. 575/2013 (the Capital Requirements Regulation or CRR), Article 17 of the Alternative Investment Fund Managers Directive (the AIFMD), Article 51 of Regulation (EU) No. 231/2013 (the AIFM Regulation) and Article 254 of Regulation (EU) 2015/35 (the Solvency II Regulation) (which in each case does not take into account any corresponding national measures) (together, the EU Risk Retention Requirements). Such interest is comprised of the Retention Note. Any change to the manner in which such interest is held may only be made in accordance with the applicable laws and regulations and will be notified to investors.

TSB Bank, in its capacity as sponsor (or a majority-owned affiliate of TSB Bank, as sponsor), is required under Section 15G of the Exchange Act (the U.S. Credit Risk Retention Requirements) to acquire and retain an economic interest in the credit risk of the interests created by the Issuer on the Closing Date in an amount of, in the case of vertical risk retention, not less than 5 per cent. TSB Bank intends to satisfy the U.S. Credit Risk Retention Requirements by acquiring and retaining an eligible vertical interest (the EVI) in the form of a single vertical security equal to a minimum of 5 per cent. of the aggregate Principal Amount Outstanding of each Class of Notes issued by the Issuer (other than the EVI). The single vertical security is in the form of the Retention Note.

Duncan Funding 2016-1 Plc - Monthly Report November 2016

Swaps

Accrual Period	Date
Period Start	17-Oct-16
Period End	16-Jan-17

FX Rate at Closing
0.7705

Interest Rate Swap

Leg	Notional	Reference Rate	Rate	Spread	All in Rate	Payments	FX Rate	GBP Equivalent	Collateral Posting
Pay		Fixed Rate		0.00000%	0.00000%	£0	1.0000	£0	£0
Receive		3m £ LIBOR	0.40100%	1.98900%	2.39000%	£0	1.0000	£0	
								<u>£0</u>	
								Net	£0

Currency Swap

Leg	Notional	Reference Rate	Rate	Spread	All in Rate	Payments	FX Rate	GBP Equivalent	Collateral Posting
Pay	£104,056,854	3m £ LIBOR	0.40100%	0.89570%	1.29670%	£0	1.0000	£0	£0
Receive	€ 135,051,076	3m EURIBOR	-0.31100%	0.40000%	0.08900%	€ 0	0.7705	£0	

Duncan Funding 2016-1 Plc - Monthly Report November 2016

Waterfall

Revenue Receipts	Oct-16	Nov-16	Dec-16	Quarterly
(a) Mortgage Revenue Receipts	£6,890,632	£6,584,693	£0	£13,475,325
(b) Bank Account Interest, Authorised Investments Income	£25,294	£19,761	£0	£45,055
(c) Issuer Swap Agreement Receipts	£0	£0	£0	£0
(d) Liquidity Reserve Fund Excess Amount	£0	£0	£0	£0
(e) Credit on the Liquidity Reserve Fund Ledger	£0	£0	£0	£0
(f) Credit on the Start-Up Loan Ledger	£0	£0	£0	£0
(g) Start-Up Loan Agreement Tranche C Advance	£0	£0	£0	£0
(h) Principal Receipts applied to cure Revenue Deficiency	£0	£0	£0	£0
(i) Loans and Related Security Enforcement Receipts	£0	£0	£0	£0
(j) Other Net Income of the Issuer	£0	£0	£0	£0
Available Revenue Receipts	£6,915,926	£6,604,453	£0	£13,520,380

Principal Receipts	Oct-16	Nov-16	Dec-16	Quarterly
(k) A3 Reserve Ledger from preceding IPD	£37,412,818	£0	£0	£37,412,818
(l-o) (r) Principal Receipts	£35,483,387	£35,951,093	£0	£71,434,480
(p) Subordinated Note and Retention Note drawing	£0	£0	£0	£0
(q) Euro exchange amounts under Currency Swap	£0	£0	£0	£0
less (s) Further Advance Purchase	£2,087,100	£1,692,985	£0	£3,780,085
less (s) New Portfolio Purchase	£0	£0	£0	£0
Available Principal Receipts	£70,809,105	£34,258,108	£0	£105,067,213

Quarterly Pre-enforcement Revenue Payments	Current Quarter	Prior Quarter	Quarterly Pre-enforcement Principal Payments within Revolving period	Current Quarter	Prior Quarter
Revenue Receipts Available for Distribution	£0	£30,251,160	Principal Receipts Available for Distribution	£0	£165,178,074
(a) (i) Note Trustee, (ii) Security Trustee fees & expenses	£0	£0	(a) (i) Revenue Deficiency for items (a) to (h) in Revenue Priority of Payments	£0	£0
(b) Paying Agent, Agent Bank, Registrar, Corporate Services fees & expenses	£0	£0	(a) (ii) Revenue Deficiency for item (j) in Revenue Priority of Payments	£0	£0
(c) (i) Servicer and (ii) Cash Manager fees & expenses	£0	£1,575,044	(a) (iii) Revenue Deficiency for item (m) in Revenue Priority of Payments	£0	£0
(c) (iii) Swap Collateral Bank fees & expenses	£0	£0	(a) (iv) Credit to the Further Advance Purchase Price Ledger	£0	£0
(c) (iv) Back-Up Facilitator fees & expenses	£0	£0	(a) (v) (A) Pay Currency Swap Provider under the Currency Swap Agreement	£0	£11,518,146
(c) (v) Issuer Account Bank Fees fees & expenses	£0	£0	(a) (v) (B) Pay Class A1a Retention Note Tranche	£0	£606,229
(d) Corporation Tax on Income or Chargeable Gain of the Issuer	£0	£0	(a) (v) (C) Pay Class A1b Noteholders	£0	£83,155,879
(e) Issuer Profit Amount	£0	£1,250	(a) (v) (D) Pay Class A1b Retention Note Tranche	£0	£4,376,646
(f) Other Third Party payments	£0	£0	(a) (v) (E) Pay Class A2 Noteholders	£0	£26,702,894
(g) Amounts due to the Interest Rate & Currency Swap Provider(s)	£0	£1,469,029	(a) (v) (F) Pay Class A2 Retention Note Tranche	£0	£1,405,462
(h) Class A Notes and Class A Retention Note Tranche Interest payments	£0	£15,711,638	(a) (vi) Credit to the New Portfolio Purchase Price Ledger	£0	£0
(i) Class A Notes and Class A Retention Note Tranche PDL Repayment	£0	£0	(a) (vii) (A) Pay Class A3 Noteholders	£0	£0
(j) Class B Notes and Class B Retention Note Tranche Interest payments	£0	£769,293	(a) (vii) (B) Pay Class A3 Retention Note Tranche	£0	£0
(k) Amount Retained to replenish Liquidity Reserve Fund	£0	£0	(a) (viii) Credit the Class A3 Reserve Ledger	£0	£0
(l) Class B Notes and Class B Retention Note Tranche PDL Repayment	£0	£0	Closing Principal Balance	£0	£37,412,818
(m) Class C Notes and Class C Retention Note Tranche Interest payments	£0	£593,052			
(n) Class C Notes and Class C Retention Note Tranche PDL Repayment	£0	£0			
(o) Any Swap Excluded Termination Payment(s)	£0	£0			
(p) Subordinated Note and SN Retention Note Tranche PDL Repayment	£0	£0			
(q) Subordinated Note and SN Retention Note Tranche Interest payments	£0	£540,774			
(r) Start Up Loan and SUL Retention Note Tranche Interest Repayment	£0	£0			
(s) Retention Note Interest Payment(s)	£0	£984,295			
(t) Retention Note Principal Deficiency Ledger Repayment	£0	£0			
(u) Start Up Loan Interest and Principal Repayment	£0	£378,995			
(v) Deferred Consideration	£0	£8,227,788			
Distributed Revenue Receipts	£0	£30,251,160			

Duncan Funding 2016-1 Plc - Monthly Report November 2016

Cash Manager Ledger Balances

Cash Manager Ledger Summary

	Current Month	Previous Month
Principal Ledger and Class A3 Reserve Ledger	£105,067,213	£70,809,105
Revenue Ledger	£13,520,380	£6,915,926
Issuer Profit Ledger	£1,250	£0
Liquidity Reserve Fund Ledger	£58,591,500	£58,591,500
Further Advance Purchase Price Ledger	£0	£0
New Portfolio Purchase Price Ledger	£0	£0
Start-Up Loan Ledger*	£58,036,925	£58,036,925
Principal Deficiency Ledger	£0	£0
Authorised Investments	£0	£0
Start Up Expenses Reserve	£551,917	£551,917
Bank Account	£177,732,260	£136,869,699

*Excludes Start-Up Loan Tranche of Retention Note

Liquidity Reserve Fund Ledger

	At Issue**	Current Period	Prior Period
Liquidity Reserve Fund Ledger b/f	£58,591,500	£58,591,500	£58,591,500
Distributed to Available Revenue Receipts	£0	£0	£0
Received from Revenue Priority of Payments	£0	£0	£0
Further Drawings made	£0	£0	£0
Liquidity Reserve Fund Ledger c/f	£0	£58,591,500	£58,591,500

**Required Amount

Principal Deficiency Ledger

	Current Period	Prior Period
Class A Principal Deficiency Ledger	£0	£0
Class B Principal Deficiency Ledger	£0	£0
Class C Principal Deficiency Ledger	£0	£0
Subordinated Note Principal Deficiency Ledger	£0	£0
Retention Note Principal Deficiency Ledger	£0	£0

Class A Principal Deficiency Ledger

	Current Period	Prior Period
Principal Deficiency Ledger b/f	£0	£0
Realised Losses in the Portfolio	£0	£0
Principal Receipts used to cover Revenue Deficiency	£0	£0
Reimbursed from Available Revenue Receipts	£0	£0
Principal Deficiency Ledger c/f	£0	£0

Class B Principal Deficiency Ledger

	Current Period	Prior Period
Principal Deficiency Ledger b/f	£0	£0
Realised Losses in the Portfolio	£0	£0
Principal Receipts used to cover Revenue Deficiency	£0	£0
Reimbursed from Available Revenue Receipts	£0	£0
Principal Deficiency Ledger c/f	£0	£0

Class C Principal Deficiency Ledger

	Current Period	Prior Period
Principal Deficiency Ledger b/f	£0	£0
Realised Losses in the Portfolio	£0	£0
Principal Receipts used to cover Revenue Deficiency	£0	£0
Reimbursed from Available Revenue Receipts	£0	£0
Principal Deficiency Ledger c/f	£0	£0

Subordinated Note Principal Deficiency Ledger

	Current Period	Prior Period
Principal Deficiency Ledger b/f	£0	£0
Realised Losses in the Portfolio	£0	£0
Reimbursed from Available Revenue Receipts	£0	£0
Principal Deficiency Ledger c/f	£0	£0

Retention Note Principal Deficiency Ledger

	Current Period	Prior Period
Principal Deficiency Ledger b/f	£0	£0
Realised Losses in the Portfolio	£0	£0
Principal Receipts used to cover Revenue Deficiency	£0	£0
Reimbursed from Available Revenue Receipts	£0	£0
Principal Deficiency Ledger c/f	£0	£0

Duncan Funding 2016-1 Plc - Monthly Report November 2016

Ratings and Triggers

Rating Based Triggers

Transaction Party	Counterparty	Required Long Term Rating (Fitch/Moody's)	Current Long Term Rating (Fitch/Moody's)	Required Short Term Rating (Fitch/Moody's)	Current Short Term Rating (Fitch/Moody's)	Status	Consequences
Issuer Account Bank	Citibank, N.A., London Branch	A/A1	A+/A1	F1/P-1	F1/P-1	Pass	The Cash Manager or the Issuer shall terminate the Bank Account Agreement and close the Bank Accounts by giving not less than 30 days' prior written notice to the Issuer Account Bank if the Issuer Account Bank fails to maintain any of the Issuer Account Bank Required Ratings.
Interest Rate Swap Provider and Currency Swap Provider	Wells Fargo Bank, N.A., London Branch						
	Moody's First Trigger	- /A3(cr)	AA/Aa1		F1+/P1	Pass	If at least 30 business days have elapsed since the last time the Swap Provider had the required rating, the Swap Provider must, if required, post collateral and may either (i) transfer its rights and obligations under the relevant Swap Agreement to an appropriately rated replacement third party, or (ii) procure a guarantee from an appropriately rated third party. A failure by the Swap Provider to take such steps will, in certain circumstances, allow the Issuer to terminate the relevant Swap Agreement.
	Moody's Second Trigger	- /Baa1(cr)	AA/Aa1		F1+/P1	Pass	If a Swap Provider does not have the required rating, the Swap Provider must, within 30 business days, either (i) transfer its rights and obligations under the relevant Swap Agreement to an appropriately rated replacement third party, or (ii) procure a guarantee from an appropriately rated third party.
	Fitch First Trigger	A/ -	AA/Aa1	F1/ -	F1+/P1	Pass	The Swap Provider must provide collateral within 14 calendar days unless, it either (i) transfers its obligations in respect of the relevant Swap to an entity that is eligible to be a swap provider under the Fitch ratings criteria, (ii) obtains a guarantee or co-obligation in respect of the relevant Swap from an entity with the required Unsupported Minimum Counterparty Ratings, or (iii) takes such other action as will maintain, or restore, the rating of the highest class of Rated Notes by Fitch.
	Fitch Second Trigger	BBB+/ -	AA/Aa1	F2/ -	F1+/P1	Pass	The Swap Provider must, within 30 calendar days, either (i) transfer its obligations in respect of the relevant Swap to an entity that is eligible to be a swap provider under the Fitch ratings criteria, (ii) obtain a guarantee or co-obligation in respect of the relevant Swap from an entity with the required Unsupported Minimum Counterparty Ratings, or an entity with the Supported Minimum Counterparty Ratings or (iii) take such other action as will maintain, or restore, the rating of the highest class of Rated Notes by Fitch. Whilst this process is ongoing the Swap Provider must also provide collateral within 14 calendar days or if collateral has previously been provided, continue to provide collateral.
Swap Collateral Account Bank	Citibank, N.A., London Branch	A/A3	A+/A1	F1/ -	F1/P-1	Pass	The Issuer and the Swap Collateral Account Bank shall use their reasonable endeavours to, within 30 calendar days following the first day on which such downgrade occurred, either: (a) close the Swap Collateral Accounts held with the Swap Collateral Account Bank and use all reasonable endeavours to open replacement accounts with a financial institution which has the required ratings and is a bank as defined in S 991 of the Income Tax Act 2007; or (b) use all reasonable endeavours to obtain a guarantee of the obligations of the Swap Collateral Account Bank under this Agreement from a financial institution having the required ratings; or (c) take such other reasonable actions to ensure that the then current rating of the Class A Notes are not adversely affected by the Swap Collateral Account Bank ceasing to have the required ratings.

Duncan Funding 2016-1 Plc - Monthly Report November 2016

Ratings and Triggers

Non Rating Based Triggers

Nature of Trigger	Summary	Prospectus Ref.	Status	Consequence
Seller	<p>The occurrence of any of the following:</p> <p>(a) the Seller is required to perfect transfer of legal title to the Loans and their Related Security (i) by an order of a court of competent jurisdiction or (ii) by any regulatory authority of which the Seller is a member and with whose instructions the Seller is required to comply,</p> <p>(b) it becomes necessary by law for the Issuer to perfect legal title to the Loans and their Related Security,</p> <p>(c) the Seller calling for perfection by serving notice in writing to that effect on the Issuer and the Security Trustee,</p> <p>(d) the security under the Deed of Charge or any material part of that security is, in the opinion of the Security Trustee, in jeopardy and the Security Trustee is required by the Note Trustee, on behalf of the Noteholders so long as any Notes are outstanding, or the other Secured Creditors if no Notes are then outstanding, to take action to reduce that jeopardy, or</p> <p>(e) a Seller Insolvency Event.</p>	p.110	<p>Pass</p> <p>Pass</p> <p>Pass</p> <p>Pass</p> <p>Pass</p>	The Issuer will be entitled to effect legal transfer of the Loans by making the required registrations and serving notice on the Borrowers.
Servicer Termination Event	<p>The occurrence of any of the following:</p> <p>(a) the Servicer defaults in the payment on the due date of any payment due and payable by it under the Servicing Agreement and such default continues unremedied for a period of seven Business Days after the earlier of the Servicer becoming aware of such default and receipt by the Servicer of written notice from the Issuer, the Seller or the Security Trustee, as the case may be, requiring the same to be remedied;</p> <p>(b) the Servicer defaults in the performance or observance of any of its other covenants and obligations under the Servicing Agreement, which failure in the reasonable opinion of the Issuer (prior to the delivery of a Note Acceleration Notice) or the Security Trustee (after the delivery of a Note Acceleration Notice) is materially prejudicial to the interests of the Noteholders, and the Servicer does not remedy that failure within 20 Business Days after the earlier of the Servicer becoming aware of the failure and receipt by the Servicer of written notice from the Issuer, the Seller or the Security Trustee requiring the Servicer's non-compliance to be remedied;</p> <p>(c) the Servicer fails to obtain or maintain the necessary licences or regulatory approvals enabling it to continue to service the Loans; or</p> <p>(d) an insolvency event occurs in relation to the Servicer.</p>	p.110/p.111	<p>Pass</p> <p>Pass</p> <p>Pass</p> <p>Pass</p>	<p>(a) Following the occurrence of a Servicer Termination Event, the Issuer may terminate the appointment of the Servicer under the Servicing Agreement and transfer servicing to a replacement servicer.</p> <p>(b) The Servicer may also resign its appointment on no less than 12 months' written notice to, among others, the Issuer and the Security Trustee with a copy being sent to the Rating Agencies provided that (i) the Issuer and the Security Trustee consent to such termination, (ii) a replacement servicer qualified to act as such under the FSMA and the CCA and with a management team with experience of servicing residential mortgages in the United Kingdom has been appointed and enters into a servicing agreement with the Issuer on substantially the same terms as the Servicing Agreement, and (iii) the resignation has no adverse effect on the then current ratings of the Rated Notes unless the Noteholders agree otherwise by Extraordinary Resolution.</p>

Duncan Funding 2016-1 Plc - Monthly Report November 2016

Ratings and Triggers

Non Rating Based Triggers

Event	Summary	Prospectus Ref.	Status	Consequence
Cash Manager Termination Event	<p>The occurrence of any of the following:</p> <p>(a) the Cash Manager defaults in the payment on the due date of any payment due and payable by it under the Cash Management Agreement and such default continues unremedied for a period of seven Business Days after the earlier of the Cash Manager becoming aware of such default and receipt by the Cash Manager of written notice from the Issuer or the Security Trustee, as the case may be, requiring the same to be remedied;</p> <p>(b) the Cash Manager defaults in the performance or observance of any of its other covenants and obligations under the Cash Management Agreement, which failure in the reasonable opinion of the Issuer (prior to the delivery of a Note Acceleration Notice) or the Security Trustee (after the delivery of a Note Acceleration Notice) is materially prejudicial to the interests of the Noteholders, and the Cash Manager does not remedy that failure within 20 Business Days after the earlier of the Cash Manager becoming aware of the failure and receipt by the Cash Manager of written notice from the Issuer or the Security Trustee requiring the Cash Manager's non-compliance to be remedied; or</p> <p>(c) an insolvency event occurs in relation to the Cash Manager.</p>	p.111/112	<p>Pass</p> <p>Pass</p> <p>Pass</p>	<p>(a) Following the occurrence of a Cash Manager Termination Event, the Issuer or the Security Trustee may terminate the appointment of the Cash Manager under the Cash Management Agreement and transfer cash management services to a replacement cash manager.</p> <p>(b) The Cash Manager may also resign its appointment on no less than 12 months' written notice to, among others, the Issuer, the Seller and the Security Trustee provided that (i) the Security Trustee provides prior written approval, (ii) a replacement Cash Manager with cash management experience has been appointed and enters into a cash management agreement with the Issuer on substantially the same terms as the Cash Management Agreement, and (iii) the resignation has no adverse effect on the then current ratings of the Rated Notes unless the Controlling Class otherwise directs.</p>
Revolving Period Termination Event	The occurrence of (i) a Pass-Through Event; (ii) an Event of Default; or (iii) a Portfolio Eligibility Trigger	p.112	Pass	Available Principal Receipts will be applied in accordance with the following priority of payments on an Interest Payment Date:
Pass-Through Event	Redemption in full of the Class A3 Notes and and the portion of the Retention Note comprised by Retention Tranche A3 during the Revolving Period	p.167	Pass	(a) first, pro rata and pari passu in or towards repayment of the principal amounts outstanding on (i) the Class A1a Notes until the Principal Amount Outstanding on the Class A1a Notes has been reduced to zero, (ii) the portion of the Retention Note comprised by Retention Tranche A1a until the Retention Tranche A1a Principal Amount has been reduced to zero, (iii) the Class A1b Notes until the Principal Amount Outstanding on the Class A1b Notes has been reduced to zero, and (iv) the portion of the Retention Note comprised by Retention Tranche A1b until the Retention Tranche A1b Principal Amount has been reduced to zero;
Event of Default	The occurrence of a Senior Note Event of Default and/ or Subordinated Note Event of Default	p.38	Pass	(b) second, pro rata and pari passu in or towards repayment of the principal amounts outstanding on (i) the Class A2 Notes until the Principal Amount Outstanding on the Class A2 Notes has been reduced to zero and (ii) the portion of the Retention Note comprised by Retention Tranche A2 until the Retention Tranche A2 Principal Amount has been reduced to zero;
Portfolio Eligibility Trigger	Portfolio Eligibility Trigger means the occurrence of any one of the following (a) the Step-Up Date; (b) a Seller Insolvency Event; (c) an unremedied breach by the Seller of any of its obligations under the Transaction Documents, which breach has (or, with the passage of time, would have) a Material Adverse Effect; (d) following the application of the Pre-Enforcement Revenue Priority of Payments on an Interest Payment Date, the balance recorded to the Subordinated Note Principal Deficiency Ledger is in excess of 1 per cent. of the aggregate Principal Amount Outstanding of all Notes as at that Interest Payment Date; (e) the Liquidity Reserve Fund are not fully funded to the Liquidity Reserve Fund Required Amount on an Interest Payment Date following the application of the Pre-Enforcement Revenue Priority of Payments; (f) redemption in full of the Class A3 Notes and reduction of the portion of the Retention Note comprised by Retention Tranche A3; and (g) the aggregate Current Balance of the Loans in the Portfolio which are then in arrears for 3 months or more or is greater than or equal to 3 per cent. of the aggregate Current Balance of all Loans in the Portfolio as at any Interest Payment Date.	p.167	<p>Pass</p> <p>Pass</p> <p>Pass</p> <p>Pass</p> <p>Pass</p> <p>Pass</p> <p>Pass</p> <p>Pass</p>	<p>(c) third, pro rata and pari passu in or towards repayment of the principal amounts outstanding on (i) the Class A3 Notes until the Principal Amount Outstanding on the Class A3 Notes has been reduced to zero and (ii) the portion of the Retention Note comprised by Retention Tranche A3 until the Retention Tranche A3 Principal Amount has been reduced to zero;</p> <p>(d) fifth, pro rata and pari passu in or towards repayment of the principal amounts outstanding on (i) the Class B Notes until the Principal Amount Outstanding on the Class B Notes has been reduced to zero and (ii) the portion of the Retention Note comprised by Retention Tranche B until the Retention Tranche B Principal Amount has been reduced to zero;</p> <p>(e) sixth, pro rata and pari passu in or towards repayment of the principal amounts outstanding on (i) the Class C Notes until the Principal Amount Outstanding on the Class C Notes has been reduced to zero and (ii) the portion of the Retention Note comprised by Retention Tranche C until the Retention Tranche C Principal Amount has been reduced to zero;</p> <p>(f) seventh, pro rata and pari passu in or towards repayment of the principal amounts outstanding on (i) the Subordinated Note until the Principal Amount Outstanding on the Subordinated Note has been reduced to zero and (ii) the portion of the Retention Note comprised by Retention Tranche SN until the Retention Tranche SN Principal Amount has been reduced to zero; and</p> <p>(g) eighth, to pay any Deferred Consideration in accordance with the Mortgage Sale Agreement in respect of the Loans sold to the Issuer from time to time, as follows: (A) the product of the Retention Tranche Deferred Consideration Payment Percentage and such Deferred Consideration to the Retention Noteholder in respect of the portion of the Retention Note comprised by Retention Tranche Deferred Consideration, and (B) all remaining amounts to the Seller.</p>

Duncan Funding 2016-1 Plc - Monthly Report November 2016

Glossary

Arrears	Arrears are calculated in accordance with standard market practice in the UK. A mortgage is identified as being in arrears when, on any due date, the overdue amounts which were due on previous due dates equal, in the aggregate, one or more full monthly payments. In making an arrears determination, the servicer calculates as of the date of determination the difference between the sum of all monthly payments that were due and payable by a borrower on any due date up to that date of determination (less the aggregate amount of all authorised underpayments made by such borrower up to such date of determination) and the sum of all payments actually made by that borrower up to that date of determination. If the result arrived at by dividing that difference (if any) by the amount of the required monthly payment equals or exceeds 1 the account is deemed to be in arrears. Arrears classification is determined based on the number of equivalent full current monthly payments that have been missed. A borrower that has missed payments that in the aggregate equal or exceeding 2 monthly payments (but for which the aggregate of missed payments is less than 3 monthly payments) would be classified as being 2 to <3 months in arrears, and so on.
Arrears Capitalisation Policy	TSB will consider capitalising arrears where a customer has made at least 6 consecutive full repayments since the last missed payment and the customer has provided consent for the capitalisation.
Constant Default Rate (CDR)	The default rate in the month is calculated as follows: $1 - (1 - (\text{balance of loans repossessed in the month (excluding recoveries)} / \text{portfolio balance at the start of the month}))^{12}$. The annualised default rate since transaction close is calculated as the average of all of the monthly annualised CDRs since transaction close expressed as a percentage.
Constant Prepayment Rate (CPR)	Monthly CPR on that calculation date means the total unscheduled principal receipts received during the period of one month ending on that calculation date divided by the aggregate current balance of the loans comprised in the portfolio as at the immediately preceding calculation date. Unscheduled Principal Repayments comprise payments from TSB for the repurchase of loans from the portfolio, and capital repayments and redemptions other than those received at the expected term end date of the loan. These are annualised using the formula: $1 - ((1 - M)^{12})$ where M is the monthly CPR expressed as a percentage. Quarterly CPR - The average of the three most recent monthly annualised CPRs expressed as a percentage. CPR Since Transaction Close - The average of all of the monthly annualised CPRs since transaction close expressed as a percentage.
Current Balance	Means, in relation to any loan at any date, the aggregate balance of the loan at such date (but avoiding double counting) including: (a) the Initial Advance; (b) any increase in the principal amount of a loan due to any further advance; (c) capitalised expenses; (d) capitalised interest; and (e) all expenses charges, fees, premium or payment due and owing by the borrower which have not yet been capitalised (including accrued interest, arrears of interest, high loan-to-value fees, insurance premiums, booking fees and valuation fees), in each case, relating to such loan less all prepayments, repayments or payments of any of the foregoing made on or prior to such date, and, in relation to the portfolio, the aggregate of the Current Balances of each loan in the portfolio.
Excess Spread	Excess spread is the available revenue receipts after the payment of senior fees, interest on the notes, payments/receipts under the swaps and replenishment of the reserve fund.
FSCS	Financial Services Compensation Scheme. This is the UK's statutory compensation scheme for customers of authorised financial services firms.
FSCS Limit	The FSCS compensation limit is currently £75,000
Geographic Analysis	The geographic analysis is prepared based on the Economic Planning Regions
Indexed LTV	The aggregate Current Balance of all loans within a mortgage account divided by the indexed valuation of the property securing the loans in that mortgage account at the reporting date.
Indexed Valuation	Indexation is applied on a regional basis to property valuations on a quarterly basis in January, April, July and October of each year using the Halifax House Price Index.
LCR	Liquidity Coverage Ratio.
Loan Seasoning	The number of months since the date of origination of the mortgage loan.
Losses	All realised losses in respect of a Loan, including any loss arising as a result of an exercise of any set-off by the relevant Borrower. Duncan Funding is only entitled to recoveries which have not been cured by Excess Spread.

Duncan Funding 2016-1 Plc - Monthly Report November 2016

Glossary

Mortgage Account / Loan	A mortgage account consists of one or more loans secured, by way of equal ranking first charge, on the same property and thereby forming a single mortgage account.
Mortgage Collections	All cash receipts on a mortgage within the portfolio excluding monies paid by TSB in respect of loans repurchased from the portfolio.
Mortgage Yield	Mortgage yield is defined as the total revenue receipts generated by the mortgage assets in the period divided by the average mortgage balance for the period. Post swap yield is after taking into account receipts/ payment under the Interest Rate Swap
Origination Channel	The origination channel of each loan. Direct origination includes loans originated in branches, direct telephone sales and internet sales.
Original LTV	Based on the original amount advanced on the date of the origination of the initial loan (excluding capitalised interest, high LTV fees, insurance fees, booking fees and valuation fees), divided by the value of the property securing the loans in that mortgage account at that date.
Principal Prepayment Rate (PPR)	<p>Monthly PPR on any calculation date means the total scheduled and unscheduled principal receipts received during the period of one month ending on that calculation date divided by the aggregate current balance of the loans comprised in the portfolio as at the immediately preceding calculation date. These are annualised using the formula: $1 - ((1 - M)^{12})$ where M is the monthly PPR expressed as a percentage.</p> <p>Quarterly PPR - The average of the three most recent monthly annualised PPRs expressed as a percentage.</p> <p>PPR Since Transaction Close - The average of all of the monthly annualised PPRs since transaction close expressed as a percentage.</p>
Purpose of Loan	Whether the purpose of the initial loan was to finance the purchase of a new property or to remortgage a property already owned by the borrower.
Weighted Average (WA)	Unless otherwise stated all weighted average calculations are weighted by current balance.
Weighted Average Margin	Weighted Average Margin for variable rate is calculated as weighted average interest rate less Bank of England Base Rate.